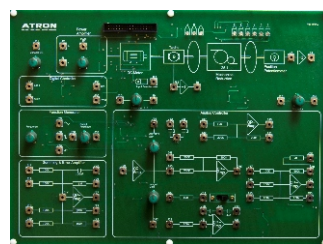


CIP-100

CIP100 is a servo control educational system which is designed to educate theoretical and practical concept/topics of linear control systems.

Velocity control, position control, verification and investigation of open loop and closed loop analog control, are the main facilities of this system.



Mechanical Unit :

The mechanical unit contains input and output potentiometers, motor and tachogenerator.

By connecting to a pc through a USB port, mechanical unit provide a four channel virtual instrumentation system for measuring and logging all necessary data in each experiment.

Electronic Unit :

The electronic unit contains an analog circuit board. The analog circuit consists of:

- Power amplifier
- Error amplifier
- Function generator 0.1 Hz to 1 Hz, sine, square & triangle.
- 2 variable attenuator
- Variable DC signal ± 1 V
- PID analog controller with independent gain controls